

Heliogen® Blau L 6900/L 6920

Heliogen® Blue L 6900/L 6920

Standard- α -Phthalocyaninblaus für wirtschaftliche Formulierungen
(L 6920 ist etwas stärker als L 6900)

Standard- α -phthalocyanine blues for economic formulations
(L 6920 is somewhat stronger than L 6900)

Vollton
Full shade

1



Chemische Struktur

Chemical Nature:

Cu-Phthalocyanin, alpha stab.
C.I. Pigment Blau 15: 1
Cu-phthalocyanine, alpha-stab.
C.I. Pigment Blue 15: 1
Color Index No. 74 160

Physikalische Form

Physical Form:

Pulver/powder

Physikalische Daten

Physical Data:

| | |
|------------------------|------------------------|
| pH-Wert | |
| pH-value | 6–9 |
| Leitfähigkeit | |
| Conductivity | < 200 μ S/cm |
| Dichte | |
| Density | 1.65 g/cm ³ |
| Spez. Oberfläche (BET) | |
| Spec. Surface (BET) | 72 m ² /g |

1 : 9,7 TiO₂
1/3 Standardfarbtiefe
1/3 standard depth of shade

2



Chemikalienbeständigkeit

Chemical Resistance:

| | |
|----------|---|
| HCL 2 % | 5 |
| NaOH 2 % | 5 |

40,0 pts Heliogen Blue L 6920
60,0 pts Sicopal Yellow L 1100

3



Temperaturbeständigkeit

Heat Stability:

300 °C

Wetterbeständigkeit

Weather Fastness:

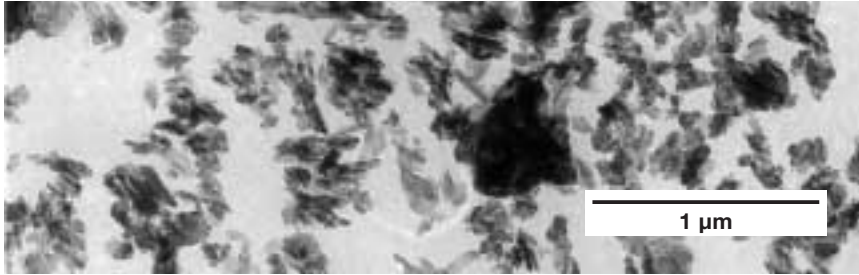
| Farbton/shade | 1 | 2 | 3 | 4 |
|--|---|-----|---|---|
| Alkyd-/Melamin alkyd/melamine | 5 | 4–5 | 5 | |
| Acryl-/Melamin acrylic/melamine | 5 | 4–5 | 5 | |
| 2-Schicht Metallic-Lack Two coat metallic | | | | 5 |

80,0 pts Heliogen Blue L 6920
20,0 pts Aluminium

4



BASF



Lösemittelechtheit
Fastness to Solvents

| | |
|--------------------------------------|---|
| Ethanol/Ethanol | 5 |
| Butylacetat/Butylacetate | 5 |
| Methylethylketon/Methyl Ethyl Ketone | 5 |
| Xylol/Xylene | 4 |
| Testbenzin/Mineral Spirit | 5 |
| Solvenon PM | 5 |

Empfohlene Einsatzgebiete
Suitable for:

| | |
|--|---|
| Einbrenn-System/Baking systems | + |
| Wässrige Systeme/Waterborne systems | + |
| Acryl-Isocyanat-Systeme/Acrylic-isocyanate systems | + |
| Säurehärtende Systeme/Acid curing systems | + |
| Aminhärtende Systeme/Amine curing systems | + |
| Physikalisch-oxidativ trocknende Systeme/Airdrying systems | + |

- + suitable
- o limited suitability
- not suitable

MB/P 014 d, e
 December 1999

The above data will be warranted by us. These data, however, as well as the properties of any product samples do not imply any legally binding assurance of certain properties or of suitability for a specific purpose so that any liability for damages cannot be derived therefrom.