

Sicotan® Gelb L 1910/L 1912

Sicotan® Yellow L 1910/L 1912

Mischphasenpigment mit höchstem Echtheitsniveau.
Universell einsetzbar.

Mixed-phase pigment with maximum fastness properties.
Suitable for all coatings systems.

Vollton **1**
Full shade
Sicotan Yellow L 1912



Chemische Struktur

Chemical Nature: Cr/Sb/Ti-Oxid
C.I. Pigment Braun 24
Cr/Sb/Ti-Oxide
C.I. Pigment Brown 24

Physikalische Form

Physical Form: Pulver/powder

Physikalische Daten

Physical Data:	L 1910	L 1912
pH-Wert pH-value	8–10	8–10
Leitfähigkeit Conductivity	< 400 µS/cm	< 400 µS/cm
Dichte Density	4.5 g/cm ³	4.5 g/cm ³
Spez. Oberfläche (BET) Spec. Surface (BET)	5 m ² /g	6 m ² /g

1 : 1.4 TiO₂
1/9 Standardfarbtiefe
1/9 standard depth
of shade
Sicotan Yellow L 1912

2



Chemikalienbeständigkeit

Chemical Resistance:

HCL 2 %	5
NaOH 2 %	5

1 : 6.4 TiO₂
1/25 Standardfarbtiefe
1/25 standard depth
of shade
Sicotan Yellow L 1912

3



Temperaturbeständigkeit

Heat Stability: > 500 °C

Wetterbeständigkeit

Weather Fastness:

Farbton/shade	1	2	3	4
Alkyd-/Melamin alkyd/melamine	4–5	4–5	4–5	3–4
Acryl-/Melamin acrylic/melamine	4–5	4–5	4–5	3–4

RAL 2004
59.0 pts Sicotan Yellow
L 1912
38.0 pts Paliotol® Orange
L 2930 HD
3.0 pts Paliotol Yellow
L 0962 HD

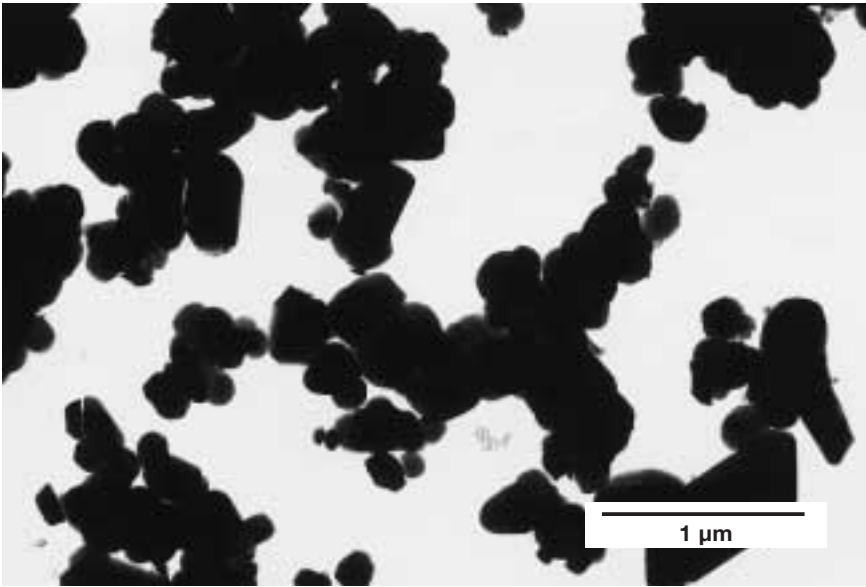
4



Überlackierbarkeit

Fastness to Overcoating: 5

BASF



Lösemittelechtheit

Fastness to Solvents :

Ethanol/Ethanol	5
Butylacetat/Butylacetate	5
Methylethylketon/Methyl Ethyl Ketone	5
Xylol/Xylene	5
Testbenzin/Mineral Spirit	5
Solvenon PM	5

Empfohlene Einsatzgebiete

Suitable for :

Einbrenn-Systeme/Baking systems	+
Wässrige Systeme/Waterborne systems	+
Acryl-Isocyanat-Systeme/Acrylic-isocyanate systems	+
Säure härtende Systeme/Acid curing systems	+
Amin härtende Systeme/Amine curing systems	+
Physikalisch-oxidativ trocknende Systeme/Airdrying systems	+

- + suitable
- limited suitability
- not suitable

MB/P 084 d, e
 October 2000

The above data will be warranted by us. These data, however, as well as the properties of any product samples do not imply any legally binding assurance of certain properties or of suitability for a specific purpose so that any liability for damages cannot be derived therefrom.